

Maui Family YMCA Summary

Mission: To promote growth and well-being for individuals and families.

Category: Community Support Services

Contact: Steven Scraggs, Chief Executive Officer

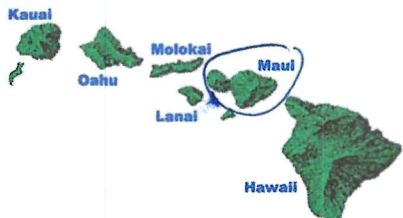
Address: 250 Kanaloa Avenue, Kahului, HI 96732

Grant History: N/A

2025 Request:	\$100,000 for Partnership Park construction expenses
----------------------	---

Notes:

- Partnership Park will be located adjacent to new West Maui YMCA Community Resource Center.
- 35,000 community-use greenspace and office center for local nonprofits, including mental health service providers, child care and senior services.
- Lahaina wildfires destroyed existing office spaces.
- Partnership Park is a \$500,000 project. \$330,000 secured. Balance \$170,000.





Maui Family YMCA
250 Kanaloa Ave
Kahului, HI 96732
(808)242-9007

FOR YOUTH DEVELOPMENT®
FOR HEALTHY LIVING
FOR SOCIAL RESPONSIBILITY

Aloha Tammy Davis Cownie and Laurence Dorcy Hawaiian Foundation Members,

Maui Family YMCA is seeking a capital contribution of \$100,000 from the Laurence H Dorcy Hawaiian Foundation. The purpose for these funds is to construct a 35,000 sq ft community-use greenspace and dedicated office space for local nonprofit organizations, mental health service providers, child care organizations and Kapuna services.

The wildfire disaster in August 2023 exacerbated significant needs in Lahaina, including child care, mental health services, Kapuna services, and social connectivity support. In August 2024, Maui Family YMCA held a “community conversation” with organizations and residents of Lahaina. What came from this conversation were major community needs, including,

- Mental Health Services
- Affordable Child Care Services
- Kapuna Support Services
- Access to Multiple Services in Single Location

From September 2023-August 2024 Maui Family YMCA provided 100% free child care services for Lahaina families out of both the Hyatt Regency Hotel and Royal Lahaina Resort.

Maui Family YMCA proposes to meet the needs of West Maui with the creation of a “Partnership Park” constructed adjacent to the soon-to-open West Maui YMCA Community Resource Center. In addition to the services provided at the Community Resource Center, the Partnership Park will include spaces and facilities to house multiple mental health and Kapuna service providers who lost their facilities to the fires in 2023.





Maui Family YMCA
250 Kanaloa Ave
Kahului, HI 96732
(808)242-9007

FOR YOUTH DEVELOPMENT®
FOR HEALTHY LIVING
FOR SOCIAL RESPONSIBILITY

The new Partnership Park will include mental health and therapeutic services for residents from birth to end-of-life. Once fully operational, the Partnership Park can accommodate 200 persons in various programs, services and daily activities.

The West Maui YMCA Community Resource Center and Partnership Park will support residents of West Maui most impacted by the fire disaster of 2023, but will be a growing and evolving community resource for years to come.

Funding from the Dorcy Foundation would make a significant and lasting impact on this project and West Maui as a whole. Opening office and program space for mental health and senior services is a serious need at this time. Maui Family YMCA has agreed to partner with the following organizations for use of the Partnership Park to provide services, including:

- Maui Calm Flotation Therapy
- Island Health
- Lahaina Strong
- Maui Behavioral Health Services
- Kahakukahi Foundation
- Lahaina Rotary Club
- Kaunoa Senior Services
- Pili Ohana
- Lele Aloha
- Kaiaulu Initiatives

In addition to office and program space, the Partnership Park will include a greenspace, fruit-bearing trees and a pavilion, all designated for community access and use.

Steven Seragas, CEO





West Maui Partnership Park Proposal

Implementation Plan

Char Matila Lead PM with Alchemy Consulting (Planning, Design Team, Construction Management) is driven by the need for sustainable build systems that work in balance with our fragile environment. Her more recent projects span temp housing, Sacred Hearts temporary school, Maui Food Bank-Da Market, as well as YMCA Kahului kitchen remodel. Char wears multiple hats within the community and has committed to the long term recovery of Lahaina's restoration and redevelopment. As Chief of Operations with Lele Aloha, a non-profit organization lead by Archie Kalepa, she will maintain an office on the West Y Resource Center campus offering Hauola grants as well as Mauka to Makai wellness and learner eco programs. <https://www.lelealoha.org>

Initial construction and implementation team consists of deeply rooted āina based contributors, Maui agriculture community, and statewide farming leadership. Leadership that is deeply rooted in place, generational kuleana, and guided by cultural values.

Ongoing programing and resource hub sustainability will initially be supported by the following:

Jaylou Cabrera - West Maui Resource Hub Director - Plan Oversight, Site Programming, and Partnership Park lead.

Kaipo Kekona - Farming, Lahaina āina based leader, ongoing leadership to sustain healthy practices in balance with place. <https://hfuuhi.org/board/>

Max Yarawamai RMG Pacific, lends his decades long landscape and agribusiness experience - Indigenous planning, planting, maintenance services. <https://rmgpacific.com/about>

Alika Atay - Food Systems, soil health, planning, food planting, scheduling, āina based education, ongoing nutrition programs and farm to table program support. <https://youtu.be/T0dW7JFDfE8?si=yTQ2mExRE3xzWMaQ>

Grow Some Good- GSG has partnered with YMCA on a 3 acre garden in Kahului focusing on sustainable native plantings and food production. GSG has extensive

programming across Maui County, including a presence in numerous elementary school and summer programs. growsomegood.org

Additional Partners- Pacific Biodiesel, Maui College Agricultural Department, Treecovery, Hawaii' Farmers Union, Kaiaulu Initiatives, Maui Forest Bathing

* **Site Details** – Lot 25 - Location 226 Kupuohi St. Lahaina, Lot 25 approximately 35,633 sq ft of mixed use space, proposed key features include modular office space to accommodate non-profit partners as well as include food trees, tree bathing, lei making florals, a pavilion covered gathering space for kūpuna and community to talk-story, and reconnect. This new space is dedicated to healing and wrap-around family resources. Timeline for the start up is February through Spring 2025.

County infrastructure, renewable energy, existing irrigation and deep connections to the community are all at the forefront of the West Maui Resource Center redevelopment project. Existing conditions allow for a quick start with prefab office spaces and dedicated landscape support.

Clear, Measurable Goals – *Alika Atay - HINA Farmer Food Systems Expert - For West Maui YMCA Healing Garden Urban Sustainability*

1. Aloha 'Āina Sustainability & Healing Garden

Through the Hawaiian Indigenous Natural Agriculture (HINA) methods we will be growing fully organic and naturally farmed, nutrient, dense food crops for the people without any use of toxic chemicals or synthetic salts.

The HINA Farming methods include better than organic practices, combined with deeply spiritual and cultural Hawaiian Chants, Pule, and Mele To produce a higher level of "Soul Food".

Initial focus on addressing increasing soil health by inoculating the grounds with indigenous microbes.(IMO). Once the inoculation process is in place, we will then move to phase 2, which will include covering the ground with black weed mat to cover the dirt, which will allow the IMO to process turning the dirt into healthy soil.

2. Providing native produce as a food source and community educational resource

Phase 2 also includes growing food and medicine in pots. The plants grown will primarily be Kalo, sweet potatoes, 'ōlena turmeric, Hawaiian chili pepper, Eggplant, And lemongrass. Growing in pots allows us to harvest and collect 100% of harvest and allow us to recycle the soil for the next planting. Green squash will also be planted along the

edge of the property, which will grow down and cover the slopes area. Passion Fruit liliko'i Will be planted along the fence line adjacent to Kahoma Stream.

The planting of fruit trees/flower trees, such as mangoes (30), breadfruit Ulu (15), puakeniken, Plumeria, and Crown Flower will commence when soil is optimized for ground planting. A staggered planting schedule will yield a harvest in 6 to 8 months, we will begin harvesting food and medicine every two weeks going forward. This garden will be able to sustain and feed hundreds if not close to 1000 families every month .

3. Providing community use programming space that has multiple use capabilities

A shade structure will be critical for the Partnership Park. Part of the proposal includes construction of a community use pavilion, which will provide space for public events, classroom space and other usage.

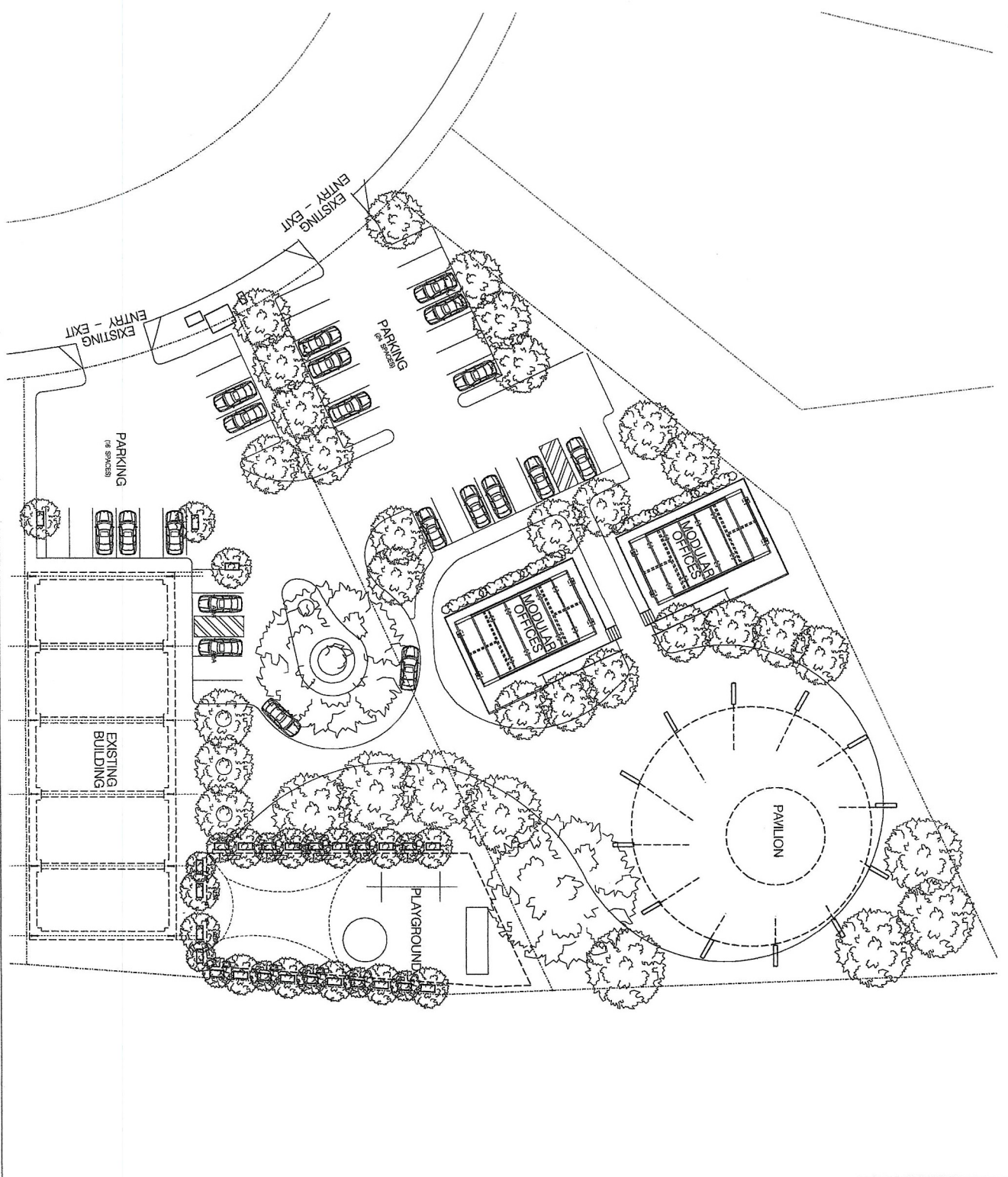
4. Providing year-around educational and resource space to deliver programming that provides community benefits that seamlessly connect indoor programming spaces to outdoor greenspace.

A Dual Modular Unit is the final piece of the Partnership Park. This structure will provide indoor and outdoor space that seamlessly connects to greenspaces and therapeutic services available throughout the Partnership Park and Resource Center. Housing multiple programs, this flexible space will be necessary to host needed service providers and resources daily.

Current Financial Commitments- Partnership Park

1. YMCY, through private fundraising, has committed \$80,000 to soil and grading services, greenspace construction and raised planter beds.
2. Maui Coastal Rotary Clubs Environmental Committee has recommended a \$250,000 donation to YMCA to support purchase and plantings of mature fruit trees, native plantings, greenspace construction and construction of a community pavilion. This funding is in the final approval stage.
3. Hawaii Community Foundation has awarded \$1,000,000 for program services that will operate out of the Partnership Park. This includes funding for Mental Health Programs, Kapuna Services, Youth Programming and Cultural Enrichment Programming. This is strictly programming funds, not capital funding.

Budget Item	Explanation	Expense	Status
Dual Modular Unit with/Patio	Build, Deliver, Setup	\$250,000	Seeking Funding
Grading and Soil Services	level site, soil, irrigation	\$30,000	Funded- Private Donation
Fruit and Tropical Trees	Mature	\$70,000	Seeking Funding
Grass and Plantings	including hardscape	\$50,000	Funded- Private Donation
Covered Pavilion	Community space	\$100,000	Seeking Funding
	Total	\$500,000	



drawing A-010.00	date 28 OCT 2024 project no. drawing by	SCALE 1/8" = 1'-0" DRAWING TITLE SITE PLAN PHASE II	West Maui YMCA Resource Center 262 Kupuohi Street, Lahaina, Maui 96761 TAX MAP KEY : (II) 4-5-010:062	REVIEWED DATE THE WORK WAS PREPARED BY ME OR UNDER MY SUPERVISION AND I AM A LICENSED PROFESSIONAL ENGINEER IN CHARGE OF THE DESIGN AND CONSTRUCTION OF THE PROJECT AND I AM NOT PROVIDING ANY OTHER SERVICES AND I AM NOT PROVIDING ARCHITECTS	SEAL PROJECT PROFESSIONAL ENGINEER 28 Kupuohi Street, Lahaina, Maui 96761	Mckinnon Architecture + Planning 3800 Kamehameha Street, Honolulu, HI 96818 808.938.8888 www.mckinnonap.com
----------------------------	--	--	---	--	---	--

Return of Organization Exempt From Income Tax

OMB No. 1545-0047

Under section 501(c), 527, or 4947(a)(1) of the Internal Revenue Code (except private foundations)

2023

Department of the Treasury
Internal Revenue Service

Do not enter social security numbers on this form as it may be made public.

Open to Public Inspection

Go to www.irs.gov/Form990 for instructions and the latest information.

A For the **2023** calendar year, or tax year beginning , **2023**, and ending , **20**

B Check if applicable:
 Address change
 Name change
 Initial return
 Final return/terminated
 Amended return
 Application pending

C Name of organization **MAUI FAMILY YMCA**
 Doing business as **MAUI FAMILY YMCA**
 Number and street (or P.O. box if mail is not delivered to street address) Room/suite
250 KANALOA AVE
 City or town, state or province, country, and ZIP or foreign postal code
KAHULUI, HI 96732

D Employer identification number
99-0105206

E Telephone number
(808) 242-9007

G Gross receipts \$ **3,476,144**

F Name and address of principal officer: **MICHAEL E. MORRIS**
SAME AS C ABOVE

H(a) Is this a group return for subordinates? Yes No
H(b) Are all subordinates included? Yes No
 If "No," attach a list. See instructions.
H(c) Group exemption number

I Tax-exempt status: 501(c)(3) 501(c) () (insert no.) 4947(a)(1) or 527

J Website: **MAUIYMCA.ORG**

K Form of organization: Corporation Trust Association Other

L Year of formation: 1961 **M** State of legal domicile: HI

Part I Summary

1 Briefly describe the organization's mission or most significant activities: TO ENHANCE THE QUALITY OF LIFE FOR INDIVIDUALS, FAMILIES, AND COMMUNITY THROUGH PROGRAMS WHICH FOSTER MORAL GROWTH AND PROMOTE HEALTHY SPIRITS, MINDS, AND BODIES FOR ALL.

2 Check this box if the organization discontinued its operations or disposed of more than 25% of its net assets.

3 Number of voting members of the governing body (Part VI, line 1a)	3	16
4 Number of independent voting members of the governing body (Part VI, line 1b)	4	16
5 Total number of individuals employed in calendar year 2023 (Part V, line 2a)	5	199
6 Total number of volunteers (estimate if necessary)	6	25
7a Total unrelated business revenue from Part VIII, column (C), line 12	7a	0
b Net unrelated business taxable income from Form 990-T, Part I, line 11	7b	0

		Prior Year	Current Year
Revenue	8 Contributions and grants (Part VIII, line 1h)	538,229	1,119,010
	9 Program service revenue (Part VIII, line 2g)	2,324,226	2,353,599
	10 Investment income (Part VIII, column (A), lines 3, 4, and 7d)	61,217	3,535
	11 Other revenue (Part VIII, column (A), lines 5, 6d, 8c, 9c, 10c, and 11e)	117	0
	12 Total revenue—add lines 8 through 11 (must equal Part VIII, column (A), line 12)	2,923,789	3,476,144
Expenses	13 Grants and similar amounts paid (Part IX, column (A), lines 1–3)	0	0
	14 Benefits paid to or for members (Part IX, column (A), line 4)	0	0
	15 Salaries, other compensation, employee benefits (Part IX, column (A), lines 5–10)	1,424,388	1,887,704
	16a Professional fundraising fees (Part IX, column (A), line 11e)	0	0
	b Total fundraising expenses (Part IX, column (D), line 25)	145,505	
	17 Other expenses (Part IX, column (A), lines 11a–11d, 11f–24e)	770,335	1,069,711
	18 Total expenses. Add lines 13–17 (must equal Part IX, column (A), line 25)	2,194,723	2,957,415
19 Revenue less expenses. Subtract line 18 from line 12	729,066	518,729	
Net Assets or Fund Balances	20 Total assets (Part X, line 16)	Beginning of Current Year 9,015,522	End of Year 8,959,659
	21 Total liabilities (Part X, line 26)	453,590	336,908
	22 Net assets or fund balances. Subtract line 21 from line 20	8,561,932	8,622,751

Part II Signature Block

Under penalties of perjury, I declare that I have examined this return, including accompanying schedules and statements, and to the best of my knowledge and belief, it is true, correct, and complete. Declaration of preparer (other than officer) is based on all information of which preparer has any knowledge.

Sign Here

Signature of officer: STEVE SCRAGGS, PRESIDENT/CEO Date: _____
 Type or print name and title

Paid Preparer Use Only

Print/Type preparer's name: _____ Preparer's signature: _____ Date: _____ Check if self-employed PTIN: _____
 Firm's name: _____ Firm's EIN: _____
 Firm's address: _____ Phone no.: _____

May the IRS discuss this return with the preparer shown above? See instructions Yes No

For Paperwork Reduction Act Notice, see the separate instructions.

Cat. No. 11282Y

Form **990** (2023)

Part VIII Statement of Revenue

Check if Schedule O contains a response or note to any line in this Part VIII

		(A) Total revenue	(B) Related or exempt function revenue	(C) Unrelated business revenue	(D) Revenue excluded from tax under sections 512-514		
Contributions, Gifts, Grants, and Other Similar Amounts	1a Federated campaigns	1a 0					
	b Membership dues	1b 0					
	c Fundraising events	1c 0					
	d Related organizations	1d 0					
	e Government grants (contributions)	1e 0					
	f All other contributions, gifts, grants, and similar amounts not included above	1f 1,119,010					
	g Noncash contributions included in lines 1a-1f	1g \$ 0					
	h Total. Add lines 1a-1f		1,119,010				
	Program Service Revenue	Business Code					
2a YOUTH DEVELOPMENT		0	1,413,845	1,413,845			
b HEALTHY LIVING		0	925,254	925,254			
c SOCIAL RESPONSIBILITY		0	14,500	14,500			
d _____							
e _____							
f All other program service revenue			0	0	0		
g Total. Add lines 2a-2f		2,353,599					
Other Revenue	3 Investment income (including dividends, interest, and other similar amounts)		3,535	0	0	3,535	
	4 Income from investment of tax-exempt bond proceeds		0	0	0	0	
	5 Royalties		0	0	0	0	
	6a Gross rents	6a	(i) Real	0	0		
			(ii) Personal	0	0		
				0	0		
	b Less: rental expenses	6b	0	0			
	c Rental income or (loss)	6c	0	0			
	d Net rental income or (loss)		0	0	0	0	
	7a Gross amount from sales of assets other than inventory	7a	(i) Securities	0	0		
			(ii) Other	0	0		
				0	0		
	b Less: cost or other basis and sales expenses	7b	0	0			
	c Gain or (loss)	7c	0	0			
	d Net gain or (loss)		0	0	0	0	
	8a Gross income from fundraising events (not including \$ 0 of contributions reported on line 1c). See Part IV, line 18	8a		0			
				0			
b Less: direct expenses	8b	0					
c Net income or (loss) from fundraising events		0		0	0		
9a Gross income from gaming activities. See Part IV, line 19	9a		0				
			0				
b Less: direct expenses	9b	0					
c Net income or (loss) from gaming activities		0	0	0	0		
10a Gross sales of inventory, less returns and allowances	10a		0				
			0				
b Less: cost of goods sold	10b	0					
c Net income or (loss) from sales of inventory		0	0	0	0		
Miscellaneous Revenue	Business Code						
	11a 0		0	0	0		
	b 0		0	0	0		
	c 0		0	0	0		
	d All other revenue		0	0	0		
e Total. Add lines 11a-11d		0					
12 Total revenue. See instructions		3,476,144	2,353,599	0	3,535		

Part IX Statement of Functional Expenses

Section 501(c)(3) and 501(c)(4) organizations must complete all columns. All other organizations must complete column (A).

Check if Schedule O contains a response or note to any line in this Part IX

Do not include amounts reported on lines 6b, 7b, 8b, 9b, and 10b of Part VIII.		(A) Total expenses	(B) Program service expenses	(C) Management and general expenses	(D) Fundraising expenses
1	Grants and other assistance to domestic organizations and domestic governments. See Part IV, line 21	0	0		
2	Grants and other assistance to domestic individuals. See Part IV, line 22	0	0		
3	Grants and other assistance to foreign organizations, foreign governments, and foreign individuals. See Part IV, lines 15 and 16	0	0		
4	Benefits paid to or for members	0	0		
5	Compensation of current officers, directors, trustees, and key employees	0	0	0	0
6	Compensation not included above to disqualified persons (as defined under section 4958(f)(1)) and persons described in section 4958(c)(3)(B)	1,543,241	1,205,579	264,149	73,513
7	Other salaries and wages	0	0	0	0
8	Pension plan accruals and contributions (include section 401(k) and 403(b) employer contributions)	0	0	0	0
9	Other employee benefits	185,381	109,342	64,039	12,000
10	Payroll taxes	159,082	126,773	23,010	9,299
11	Fees for services (nonemployees):				
a	Management	0	0	0	0
b	Legal	0	0	0	0
c	Accounting	0	0	0	0
d	Lobbying	0	0	0	0
e	Professional fundraising services. See Part IV, line 17	0			0
f	Investment management fees	0	0	0	0
g	Other. (If line 11g amount exceeds 10% of line 25, column (A), amount, list line 11g expenses on Schedule O.)	80,737	18,445	62,292	0
12	Advertising and promotion	15,678	15,678	0	0
13	Office expenses	0	0	0	0
14	Information technology	0	0	0	0
15	Royalties	0	0	0	0
16	Occupancy	116,643	116,643	0	0
17	Travel	19,897	5,925	2,184	11,788
18	Payments of travel or entertainment expenses for any federal, state, or local public officials	0	0	0	0
19	Conferences, conventions, and meetings	49,447	42,653	1,914	4,880
20	Interest	0	0	0	0
21	Payments to affiliates	0	0	0	0
22	Depreciation, depletion, and amortization	59,315	41,958	17,357	0
23	Insurance	38,267	0	38,267	0
24	Other expenses. Itemize expenses not covered above. (List miscellaneous expenses on line 24e. If line 24e amount exceeds 10% of line 25, column (A), amount, list line 24e expenses on Schedule O.)				
a	SUPPLIES	149,188	114,244	14,264	20,680
b	CONTRACT SERVICES	131,144	118,069	13,075	0
c	LAHAINA YOUTH DAY CAMP	129,026	129,026	0	0
d	AMORTIZED RENT	124,800	124,800	0	0
e	All other expenses	155,569	101,946	40,278	13,345
25	Total functional expenses. Add lines 1 through 24e	2,957,415	2,271,081	540,829	145,505
26	Joint costs. Complete this line only if the organization reported in column (B) joint costs from a combined educational campaign and fundraising solicitation. Check here <input type="checkbox"/> if following SOP 98-2 (ASC 958-720)	0	0	0	0

Part X Balance Sheet

Check if Schedule O contains a response or note to any line in this Part X

		(A) Beginning of year		(B) End of year
Assets	1 Cash—non-interest-bearing	3,161,945	1	3,186,853
	2 Savings and temporary cash investments	197,713	2	379,345
	3 Pledges and grants receivable, net	0	3	0
	4 Accounts receivable, net	118,830	4	74,690
	5 Loans and other receivables from any current or former officer, director, trustee, key employee, creator or founder, substantial contributor, or 35% controlled entity or family member of any of these persons	0	5	0
	6 Loans and other receivables from other disqualified persons (as defined under section 4958(f)(1)), and persons described in section 4958(c)(3)(B)	0	6	0
	7 Notes and loans receivable, net	0	7	0
	8 Inventories for sale or use	8,567	8	1,963
	9 Prepaid expenses and deferred charges	0	9	0
	10a Land, buildings, and equipment: cost or other basis. Complete Part VI of Schedule D	10a 0		
	b Less: accumulated depreciation	10b 0		
	11 Investments—publicly traded securities	1,540,945	11	2,148,765
	12 Investments—other securities. See Part IV, line 11	0	12	0
	13 Investments—program-related. See Part IV, line 11	0	13	0
	14 Intangible assets	0	14	0
	15 Other assets. See Part IV, line 11	3,290,093	15	3,168,043
16 Total assets. Add lines 1 through 15 (must equal line 33)	9,015,522	16	8,959,659	
Liabilities	17 Accounts payable and accrued expenses	0	17	66,398
	18 Grants payable	0	18	0
	19 Deferred revenue	320,413	19	106,843
	20 Tax-exempt bond liabilities	0	20	0
	21 Escrow or custodial account liability. Complete Part IV of Schedule D	0	21	0
	22 Loans and other payables to any current or former officer, director, trustee, key employee, creator or founder, substantial contributor, or 35% controlled entity or family member of any of these persons	0	22	0
	23 Secured mortgages and notes payable to unrelated third parties	0	23	0
	24 Unsecured notes and loans payable to unrelated third parties	0	24	0
	25 Other liabilities (including federal income tax, payables to related third parties, and other liabilities not included on lines 17–24). Complete Part X of Schedule D	133,177	25	163,667
	26 Total liabilities. Add lines 17 through 25	453,590	26	336,908
Net Assets or Fund Balances	Organizations that follow FASB ASC 958, check here <input type="checkbox"/> and complete lines 27, 28, 32, and 33.			
	27 Net assets without donor restrictions	5,193,349	27	5,305,699
	28 Net assets with donor restrictions	3,368,586	28	4,015,916
	Organizations that do not follow FASB ASC 958, check here <input type="checkbox"/> and complete lines 29 through 33.			
	29 Capital stock or trust principal, or current funds	0	29	0
	30 Paid-in or capital surplus, or land, building, or equipment fund	0	30	0
	31 Retained earnings, endowment, accumulated income, or other funds	0	31	0
32 Total net assets or fund balances	8,561,935	32	9,321,615	
33 Total liabilities and net assets/fund balances	9,015,525	33	9,658,523	